

MANUAL

OPERATING & MAINTENANCE INSTRUCTIONS

GETINGE GS 100

and

GETINGE GS 200



IMPORTANT!:

Read these instructions carefully and familiarize yourself with them before the unit is put into service.

 **GETINGE**

TABLE OF CONTENTS

HOW TO USE THIS MANUAL.....2

INSTALLATION3

START-UP.....3

HOW TO USE THE SEALER.....4

HOW TO USE THE SEALER WITH ROLL-SUPPORT AND CUTTING DEVICE:5

EXCHANGING THE CUTTING-KNIFE6

TROUBLESHOOTING7

TECHNICAL SPECIFICATIONS:7

SPARE PART LIST8

APPENDIX9

HOW TO USE THIS MANUAL

This manual explains how you should install the sealer, how it should be operated and what you can do when problems should occur.

Each chapter covers a certain option of the sealer and explains how this option can be used.

In this manual the following symbols are being used:



Advise: Helpful information is given here.



Attention: Pay good attention to the instructions given.



Warning: Warning for possible damage to the sealer or those using it.

INSTALLATION

The environment for the sealer should be clean and dust-free.

1. After unpacking the sealer, place it at the desired position. This should be a flat and firm surface.
2. Make sure, the voltage and frequency match those specified for the sealer. (Important for warranty cases).
3. Put the lever in the upright position.
4. Connect the sealer to the mains.

Now the sealer is installed.

Fill out the guarantee-card and send it in, in the supplied envelop.

START-UP



REMARK:

The sealer can seal all sterilisation-packaging materials.
The sealer with roll-support and a cutting device can be used to seal roll-material as well.



Important:

Both sealers are built for short time use, this means, the sealers are not built for continuous use. When the sealers are used for a long period of time, it will start to heat up and switch off at a certain temperature. After about 15 minutes, the sealer can be used again.

To prevent this from happening, please notice the following:

Seal-frequency:	Pause of 15 minutes after ... seals
1 /Min	--
2-3 /Min	200
4-5 /Min	100
from 5 /Min	50

HOW TO USE THE SEALER

1. Put the adjust-knob "sealing time" to "0" (fig. 1).
By turning the adjust-knob clockwise the sealing-time can be adjusted.



Advise: Increase the sealing-time in small amount starting from "0".

2. Place the material to be sealed between the sealing-bars. Make sure, the paper-material is below and the foil-material is on top.

3. Close the sealing-bars by pushing the lever down.



Warning:

Do not seal without any material and do not place any objects besides pouches between the sealing-bars! In this way you will prevent the PTFE-material from getting damaged. Damaged parts will produced a bad seal.

4. After the lever is in its lowest position, you can hear two sounds; one low tone and one high tone.

⇒ Low means: The sealing-bar is being heated.

⇒ High means: The produced heat is now sealing the pouch.

5. After the tones have stopped, you can put the lever back in the upright position.
The sealing-procedure has ended.

After you have adjusted the sealer to the optimal sealing-time-adjustment for one specific material, you could memorise this position for further use.

Most laminate-sterilisation pouches can be sealed at a 2-3 seconds adjustment.



Important:

To make sure, your sealer always produces a good quality seal, we advise you to check the sealing result at least once every week.

HOW TO USE THE SEALER WITH ROLL-SUPPORT AND CUTTING DEVICE:

Sealing roll-material should be done as follows;

1. Place the roll-material on the roll-support. Pull the material according to fig. 2 up to the sealing-bars. The foils-material "F" is on top, the paper "P" below.
2. The cutting-knife should be on the left or right side on the upper bar. Now pull the roll-material between the bars.
3. Put the adjust-knob "sealing time" to "0" (fig. 1).
By turning the adjust-knob clockwise the sealing-time can be adjusted.



Advise: Increase the sealing-time in small amount starting from "0".

4. Place the material to be sealed between the sealing-bars. Make sure, the paper-material is below and the foil-material is on top.
5. Close the sealing-bars by pushing the lever down.



Warning:

Do not seal without any material and do not place any objects besides pouches between the sealing-bars! In this way you will prevent the PTFE-material from getting damaged. Damaged parts will produced a bad seal.

6. After the lever is in its lowest position, you can hear two sounds; one low tone and one high tone.
⇒ Low means: The sealing-bar is being heated.
⇒ High means: The produced heat is now sealing the pouch.
7. Cut the pouch from the roll during the sealing procedure. This is done by sliding the knife from the left to the right (or the other way around)



Warning:

Use the cutting-device only when the sealing-bars are closed. In this way you prevent injuries caused by the knife.

8. After the tones have stopped, you can put the lever back in the upright position. The sealing-procedure has ended.

After you have adjusted the sealer to the optimal sealing-time-adjustment for one specific material, you could memorise this position for further use.

Most laminate-sterilisation pouches can be sealed at a 2-3 seconds adjustment.



Important:

To make sure, your sealer always produces a good quality seal, we advise you to check the sealing result at least once every week.



Important:

To make sure, your sealer has a long and trouble less life, we advise you to service your sealer at least two times every year.

During a service, the following parts should be checked or exchanged:

- The PTFE-strip on the heating-bar
- The PTFE-strip on the pressure-bar
- The sealing-result
- The sharpness of the cutting knife

AUTOMATICAL SEAL-TIME-ADJUSTMENT

When you would make a new seal within 10 seconds of the last seal, the sealing-time is automatically adjusted. If the sealing-time would not be adjusted, the temperature of the sealing-bars would become eventually too high and melt the pouch. By automatically adjusting the sealing-time, this is prevented.

EXCHANGING THE CUTTING-KNIFE

Only sealer with cutting device:



Warning:

When you exchange the cutting-knife, beware the sharp edges of the knife. They could easily wound you, if you do not handle them carefully.

After many sealing and cutting-procedures, it can happen that the cutting result is getting poor. This indicates the cutting-knife is worn down. The cutting-procedure can be improved as follows;

1. By turning the cutting-knife! The built-in knife has two cutting-edges. When one side is worn down, rotate the knife to use the other side:
Unscrew nut "A" (fig. 3) and remove the knife-holder with the knife.
WARNING: DO NOT TAKE HOLD OF THE KNIFE AT THE SHARP EDGES!
2. Remove the knife from the holder and rotate the knife in such way, the worn down side is pointing up. Position the knife back into the knife-holder. Replace the knife-holder onto the sealer and secure it with nut "A".
3. By exchanging the knife! When both sides of the cutting knife have worn down, the knife has to be exchanged. Proceed as mentioned in point 1 and use only genuine spare-parts.

TROUBLESHOOTING

It could be possible, your sealer does not function as it should.

Attention! The impulse-sealer should be disconnected from the mains before opening the housing. Servicing and repairs should only be done by the dealer or by sufficient technical schooled employees. In any case, the sealer should be disconnected from the mains.

1. The heating-bar does not heat up.
Check if the sealer is connected to the mains.
Check the connection between the heating-bar and the transformer.
Check the fuse on the control-plate.
2. The seal melts and the material sticks to the pressure-bar.
Reduce the sealing-time.
3. The seal is not strong enough.
Increase the sealing-time and keep the foil without wrinkles.
Increase the pressure from the pressure-bar by screwing the two distance-screws more into the supporting-studs.

TECHNICAL SPECIFICATIONS:

Dimensions (L x W x H)	410 x 300 x 195 mm
Sealing-time range	0-5 seconds
Sealing width	10 mm
Power consumption	870 W
Power supply	220-230V / 50 Hz
Fuse	5 A
Weight	8,5 kg

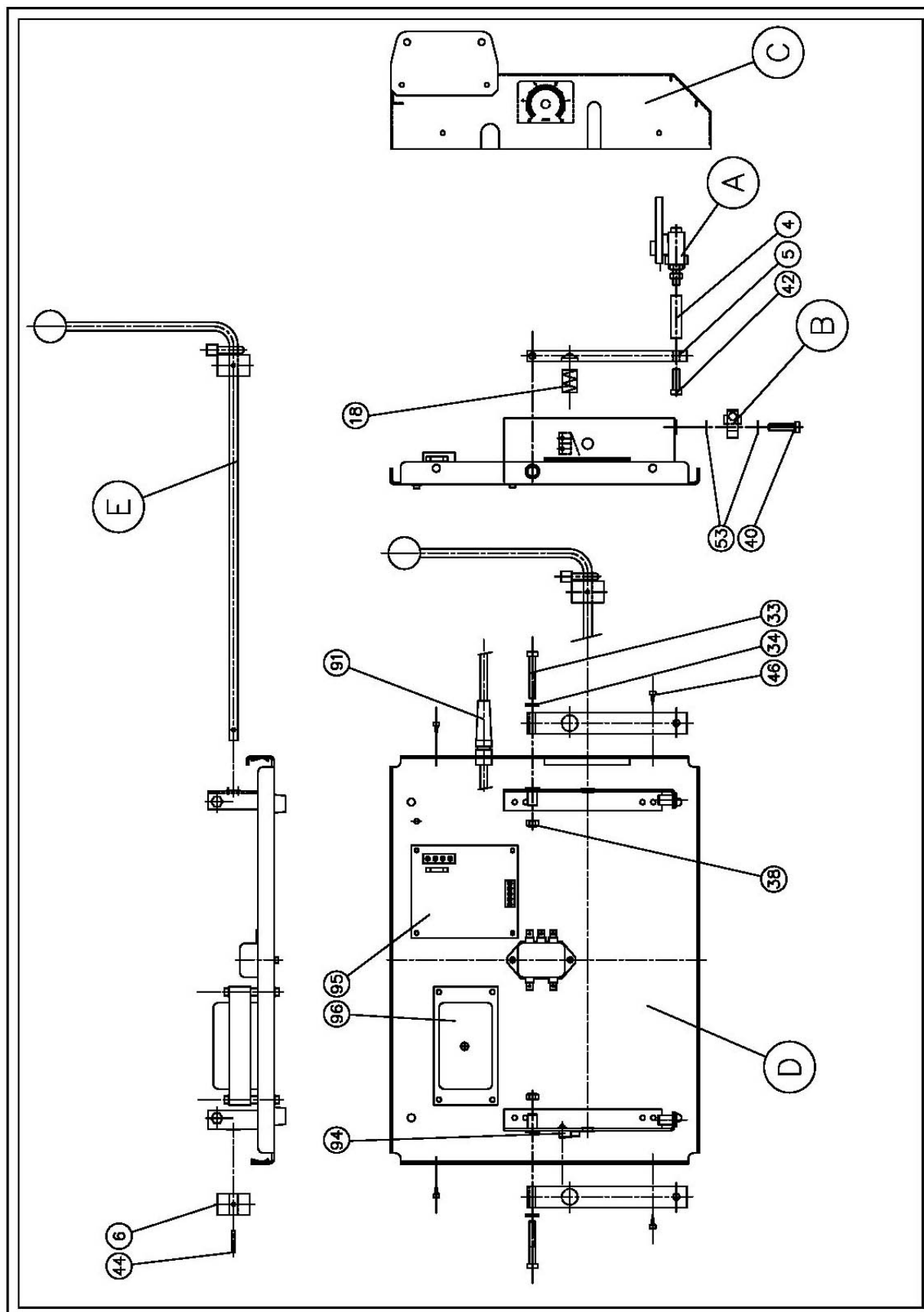
Every of our impulse- sealer is being built and tested according to the guidelines of the German TÜV.

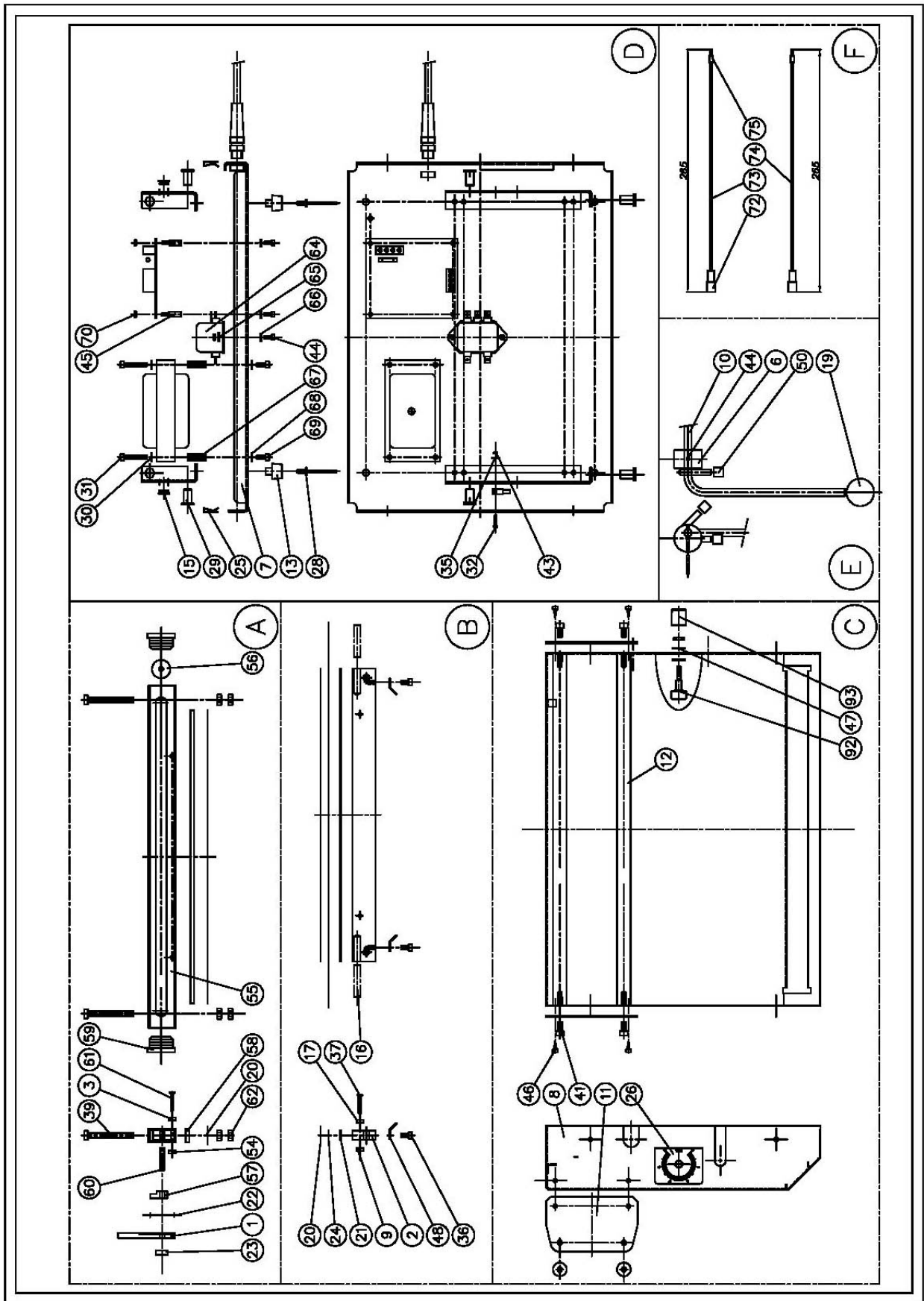


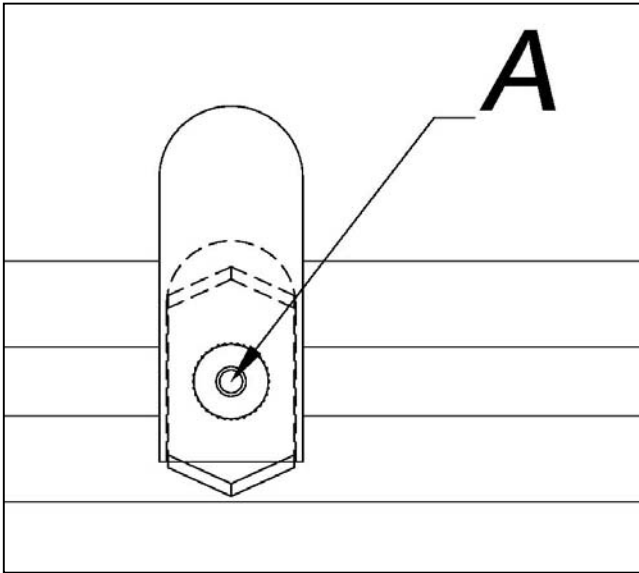
SPARE PART LIST

POS.NR	Description	Ident. No.
1	Knife holder	4425121
20	PTFE-tape	4413053
21	PTFE-strip	4413054
22*	Cutting-knife	4413008
24	Seal-wire	4425239
58	Pressure-strip	4413072
92	Potentiometer	4414002
93	Adjustment knob	4414204
94	switch	4414021
95	Electronic-plate	4425236
96	Transformer	4414223

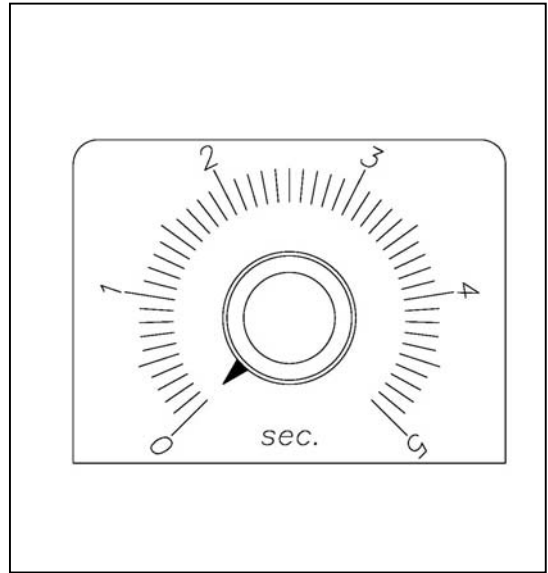
* Only sealer with cutting device
For other parts, please contact your dealer



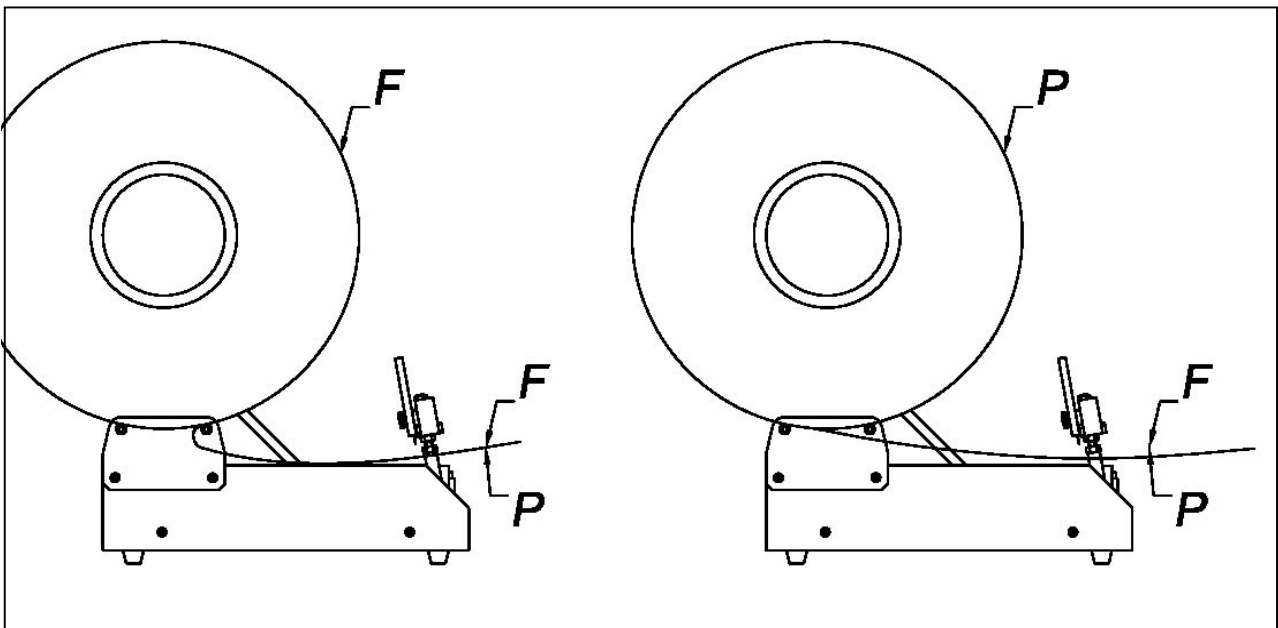




Picture 1



Picture 3



Picture 2

CE